

Project:



# Working Drawing

## G.I.K GYMNASIUM




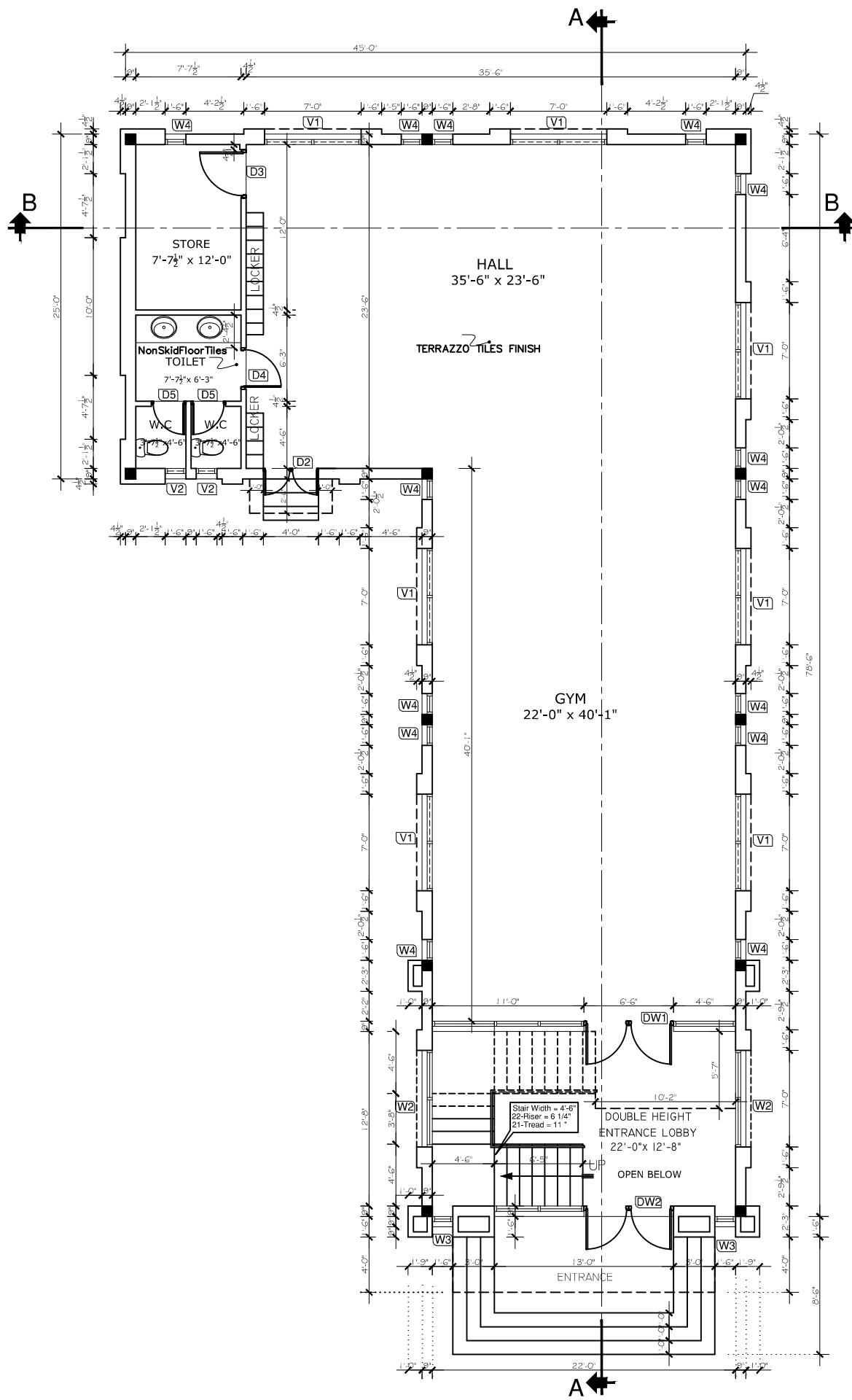
**BAYAR ASSOCIATES**  
Architects, Engineers  
And Planners

OFFICE.NO.85 2ND FLOOR, MOBEE  
PLAZA HAIDER ROAD , RAWALPINDI .  
PH: 051-5110725, 051-5876126  
MOBILE: 0301-5555375  
E-MAIL: bayarassociates@yahoo.com

**ARCHITECTURAL TENDER DRAWINGS**

S. NO.	DWG. NO.	DESCRIPTIONS	REMARKS
TITLE SHEET			
1	SH-00	3D VIEW (isometrics, perspectives,)	
2	SH-01	LIST OF DRAWINGS	
ARCHITECTURA PLANS			
3	AR-01	GROUND FLOOR PLAN (WORKING)	
4	AR-02	FIRST FLOOR PLAN (WORKING)	
5	AR-03	MUMTY (WORKING)	
6			
ELEVATIONS			
7	AR-04	FRONT & REAR ELEVATION	
8	AR-05	Right & Left Side Elevation	
MAIN SECTIONS AND DETAIL			
9	AR-06	Section at A-A & B-B	
ELECTRICAL LAYOUT			
10	E-01	GROUND FLOOR PLAN (ELECTRICAL LAYOUT)	
11	E-02	FIRST FLOOR PLAN (ELECTRICAL LAYOUT)	
12	E-03	(GENERAL NOTES / TYPICAL DETAILS)	
SEWERAGE			
13	P-01	GROUND FLOOR PLAN (PLUMBING LAYOUT)	

		Project:		<b>G I K</b> Gymnasium		 <b>BAYAR ASSOCIATES</b> Architects, Engineers And Planners <small>OFFICE: NO.85 2ND FLOOR, MOBEE                  PLAZA HAIDER ROAD, RAWALPINDI.                  PH: 031-5110728, 031-5676126                  MOBILE: 0301-2555375                  E-MAIL: bayarassociates@yahoo.com</small>	
				<b>Working Drawing</b>			
		Title:		LIST OF DRAWING		Architect: BAYAR KHIZAR	DRG. NO. SH-01
						Checked	
						Scale: 1/8" = 1'-0"	JOB NO. 01/2023
						Date: August -2023	



**Ground Floor Plan.**  
COV. AREA G.F = 2385.00 SFT

**SCHEDULE OF OPENINGS**

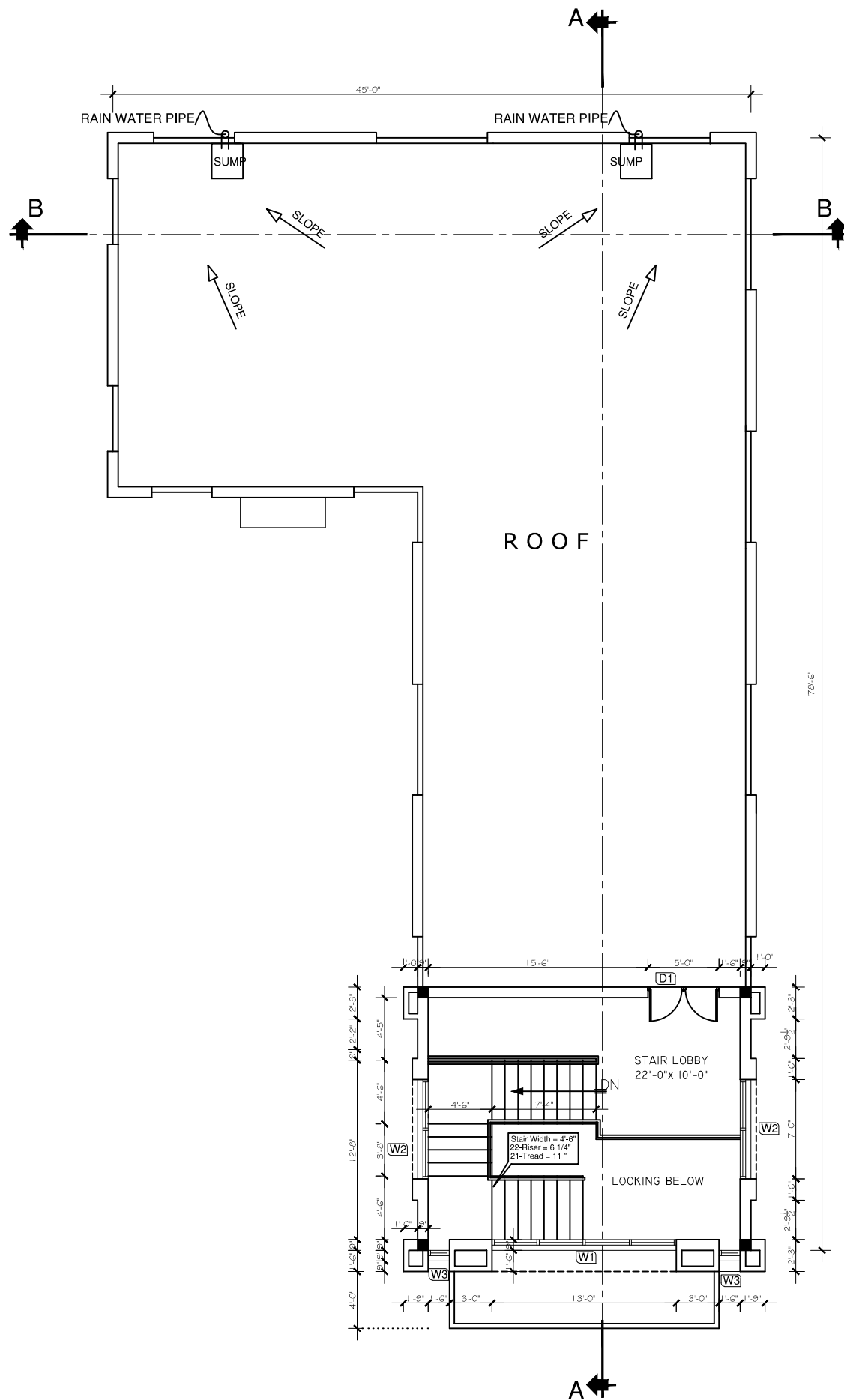
S/ NO.	Name.	SIZES.		Levels.		TYPE.	REMARKS	QUANTITY
		Width	Height	Sill Lev	Lintel Lev			
01. DOORS.								
D1		5'-0"	7'-6"	±0'-0"	±7'-6"	Operable door	Wooden panel door	1
D2		4'-0"	7'-6"	±0'-0"	±7'-6"	Operable door	Wooden panel door	1
D3		3'-6"	7'-6"	±0'-0"	±7'-6"	Operable door	Wooden (Push door)	1
D4		3'-0"	7'-6"	±0'-0"	±7'-6"	Operable door	Wooden (Push door)	1
D5		2'-6"	7'-6"	±0'-0"	±7'-6"	Operable door	Wooden (Push door)	2
02. DOOR/WINDOWS.								
DW1		22'-0"	9'-6"	±0'-0"	±9'-6"	Operable door	Aluminium door w/in	1
DW2		13'-0"	9'-6"	±0'-0"	±9'-6"	Operable door	Aluminium door w/in	1
03. WINDOWS.								
W1		13'-0"	9'-0"	±0'-6"	±9'-6"	Sliding Window	Aluminium	1
W2		7'-0"	6'-0"	±1'-6"	±7'-6"	Sliding Window	Aluminium	4
W3		1'-6"	8'-6"	±1'-0"	±9'-6"	Fix Window	Aluminium	4
W4		1'-6"	6'-0"	±1'-6"	±7'-6"	Fix Window	Aluminium	14
04. VENTILATORS.								
V1		7'-0"	2'-0"	±7'-6"	±9'-6"	Operable Ven.	Aluminium	7
V2		1'-6"	2'-0"	±5'-6"	±7'-6"	Operable Ven.		

Project:		<b>GIK</b> Gymnasium	
<b>Working Drawing</b>			
Title:		Ground Floor Plan	
S.No.	Date	Revisions.	
		Description	

**BAYAR ASSOCIATES**  
Architects, Engineers  
And Planners

OFFICE NO. 35 2ND FLOOR, MOHBI  
PLAZA HADHR ROAD, KAN AL FINDER.  
PH: 05110725, 0515876126  
MOBILE: 0301-555375  
E-MAIL: bayarassociates@yahoo.com


Architect:	BAYAR KHIZAR	DRG. NO.	AR-01
Checked:		JOB NO.	01/2023
Scale:	1/8" = 1'-0"	Date:	August -2023

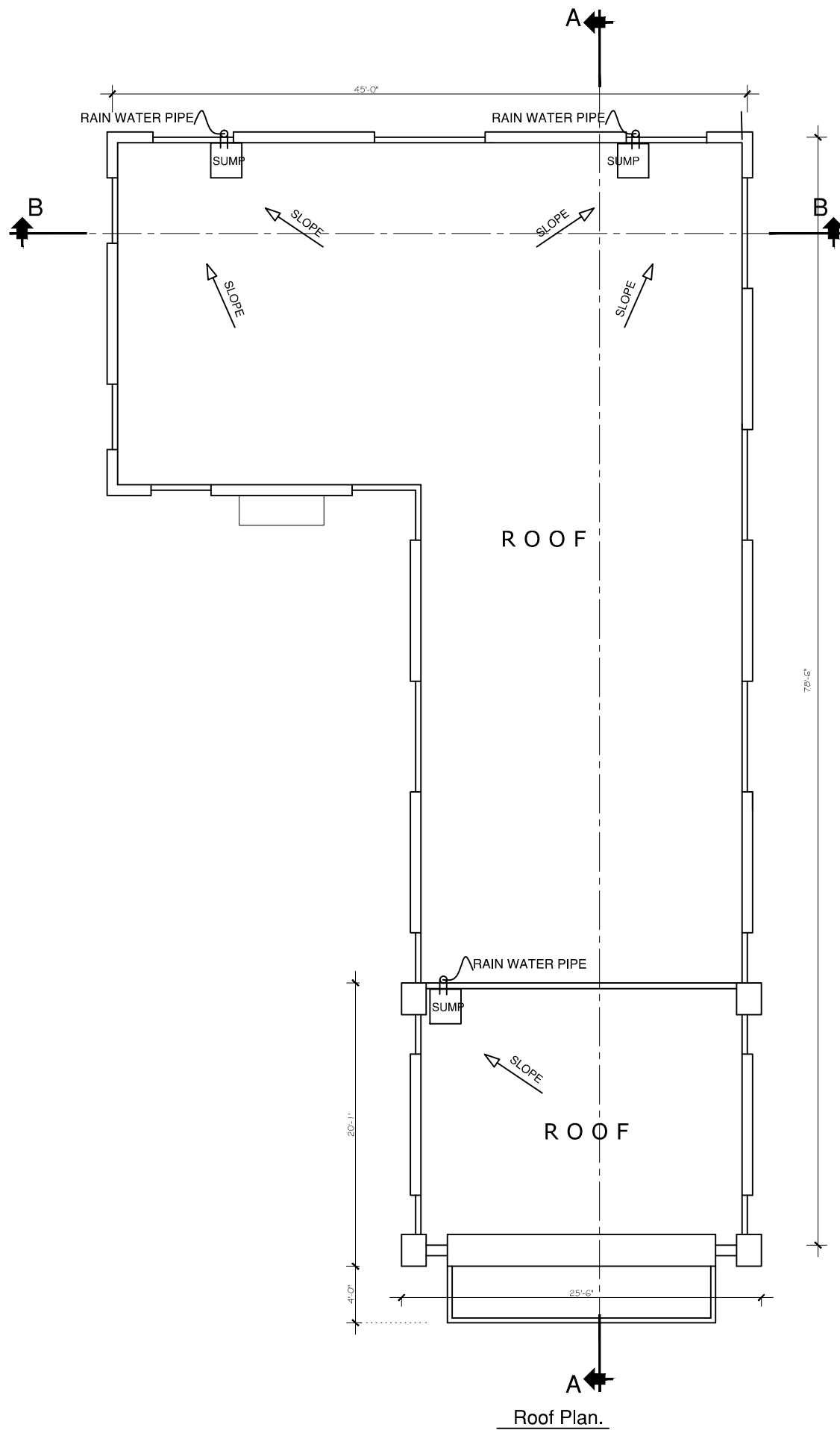


**First Floor Plan.**

COV. AREA G.F = 472.00 SFT


**SCHEDULE OF OPENINGS**

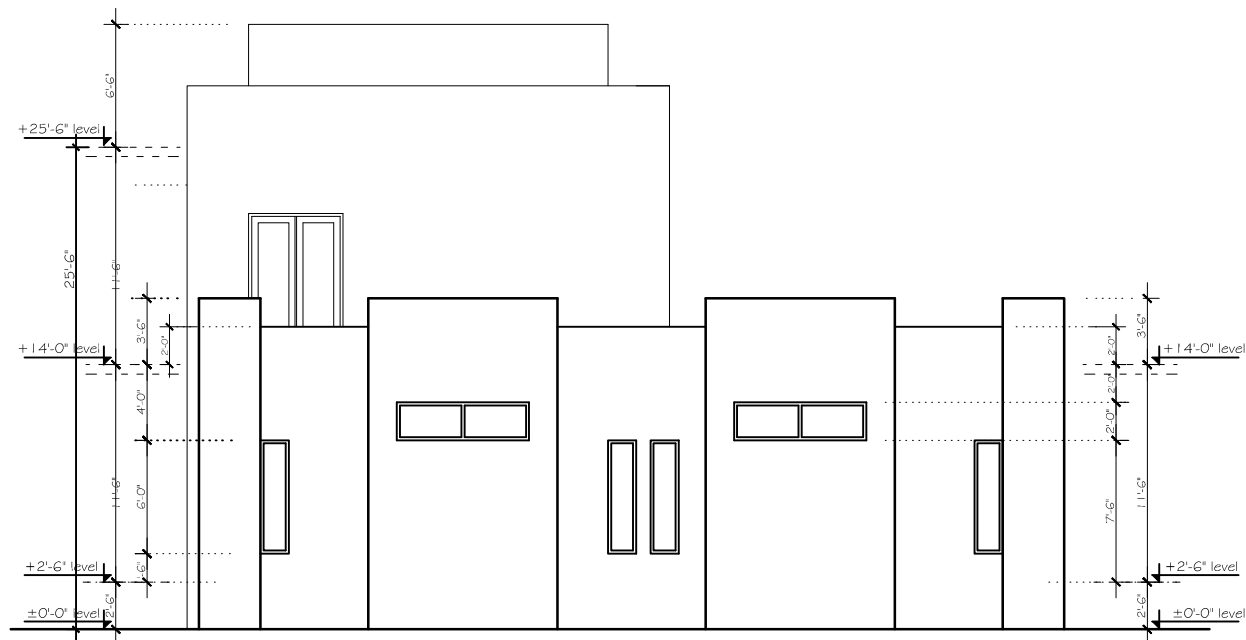
S/ NO.	Name.	SIZES.		Levels.		TYPE.	REMARKS	QUANTITY	Project:	Architect:	DRG. NO.
		Width	Height	Sill Lev	Lintel Lev						
01. DOORS.											
D1	5'-0"	7'-6"	±0'-0"	±7'-6"	Operable door	Wooden panel door	1	<b>GIK</b> Gymnasium	 <b>BAYAR ASSOCIATES</b> Architects, Engineers And Planners	OFFICE NO: 35 2ND FLOOR, MOBEEL PLAZA HADHR BROAD, KAMALPINDI. PH: 05110725, 0515876126 MOBILE: 0301-5555375 E-MAIL: bayarassociates@yahoo.com	
D2	4'-0"	7'-6"	±0'-0"	±7'-6"	Operable door	Wooden panel door	1				
D3	3'-6"	7'-6"	±0'-0"	±7'-6"	Operable door	Wooden (Push door)	1				
D4	3'-0"	7'-6"	±0'-0"	±7'-6"	Operable door	Wooden (Push door)	1				
D5	2'-6"	7'-6"	±0'-0"	±7'-6"	Operable door	Wooden (Push door)	2				
02. DOOR/WINDOWS.											
DW1	22'-0"	9'-6"	±0'-0"	±9'-6"	Operable door	Aluminium door w/in	1	<b>Working Drawing</b>	<b>BAYAR KHIZAR</b>	<b>AR-02</b>	
DW2	13'-0"	9'-6"	±0'-0"	±9'-6"	Operable door	Aluminium door w/in	1				
03. WINDOWS.											
W1	13'-0"	9'-0"	±0'-6"	±9'-6"	Sliding Window	Aluminium	1	<b>First Floor Plan</b>	Scale: 1/8" = 1'-0"	<b>JOB NO.</b> 01/2023	
W2	7'-0"	6'-0"	±1'-6"	±7'-6"	Sliding Window	Aluminium	4				
W3	1'-6"	8'-6"	±1'-0"	±9'-6"	Fix Window	Aluminium	4				
W4	1'-6"	6'-0"	±1'-6"	±7'-6"	Fix Window	Aluminium	14				
04. VENTILATORS.											
V1	7'-0"	2'-0"	±7'-6"	±9'-6"	Operable Ven.	Aluminium	7	Revisions. S.No. Date Description	Date: August -2023		
V2	1'-6"	2'-0"	±5'-6"	±7'-6"	Operable Ven.						



Roof Plan.

SCHEDULE OF OPENINGS

S/ NO.	Name.	SIZES.		Levels.		TYPE.	REMARKS	QUANTITY	Project:	Architect:	DRG. NO.
		Width	Height	Sill Lev	Lintel Lev						
01. DOORS.											
D1	5'-0"	7'-6"	±0'-0"	±7'-6"	Operable door	Wooden panel door	1	<b>GIK</b> Gymnasium	 <b>BAYAR ASSOCIATES</b> Architects, Engineers And Planners	OFFICE: NO. 32 2ND FLOOR, MOHBI PLAZA, HAIDER ROAD, JAWAHAR PINDI. PH: 051-518725, 051-5876126 MOBILE: 0301-5555375 E-MAIL: bayarassociates@yahoo.com	
D2	4'-0"	7'-6"	±0'-0"	±7'-6"	Operable door	Wooden panel door	1				
D3	3'-6"	7'-6"	±0'-0"	±7'-6"	Operable door	Wooden (Flush door)	1				
D4	3'-0"	7'-6"	±0'-0"	±7'-6"	Operable door	Wooden (Flush door)	1				
D5	2'-6"	7'-6"	±0'-0"	±7'-6"	Operable door	Wooden (Flush door)	2				
02. DOOR/WINDOWS.											
DW1	22'-0"	9'-6"	±0'-0"	±9'-6"	Operable door	Aluminium door w/in	1	<b>Working Drawing</b>	<b>BAYAR KHIZAR</b>	<b>AR-03</b>	
DW2	13'-0"	9'-6"	±0'-0"	±9'-6"	Operable door	Aluminium door w/in	1				
03. WINDOWS.											
W1	13'-0"	9'-0"	±0'-6"	±9'-6"	Sliding Window	Aluminium	1	Title: <b>Roof Plan</b>	Scale: 1/8" = 1'-0"	JOB NO. <b>01/2023</b>	
W2	7'-0"	6'-0"	±1'-6"	±7'-6"	Sliding Window	Aluminium	4				
W3	1'-6"	8'-6"	±1'-0"	±9'-6"	Fix Window	Aluminium	4				
W4	1'-6"	6'-0"	±1'-6"	±7'-6"	Fix Window	Aluminium	14				
04. VENTILATORS.											
V1	7'-0"	2'-0"	±7'-6"	±9'-6"	Operable Ven.	Aluminium	7	S.No.      Date      Description	Date: August -2023		
V2	1'-6"	2'-0"	±5'-6"	±7'-6"	Operable Ven.						



REAR ELEVATION



FEONT ELEVATION

SCHEDULE OF OPENINGS

S/ NO.	Name.	SIZES.		Levels.		TYPE.	REMARKS	QUANTITY
		Width.	Height	Sill Lev	Lintel Lev			
01. DOORS.								
D1		5'-0"	7'-6"	±0'-0"	+7'-6"	Operable door	Wooden panel door	1
D2		4'-0"	7'-6"	±0'-0"	+7'-6"	Operable door	Wooden panel door	1
D3		3'-6"	7'-6"	±0'-0"	+7'-6"	Operable door	Wooden (Push door)	1
D4		3'-0"	7'-6"	±0'-0"	+7'-6"	Operable door	Wooden (Push door)	1
D5		2'-6"	7'-6"	±0'-0"	+7'-6"	Operable door	Wooden (Push door)	2
02. DOOR/WINDOWS.								
DW1		22'-0"	9'-6"	±0'-0"	+9'-6"	Operable door	Aluminium door w/in	1
DW2		13'-0"	9'-6"	±0'-0"	+9'-6"	Operable door	Aluminium door w/in	1
03. WINDOWS.								
W1		13'-0"	9'-0"	+0'-6"	+9'-6"	Sliding Window	Aluminium	1
W2		7'-0"	6'-0"	+1'-6"	+7'-6"	Sliding Window	Aluminium	4
W3		1'-6"	8'-6"	+1'-0"	+9'-6"	Fix Window	Aluminium	4
W4		1'-6"	6'-0"	+1'-6"	+7'-6"	Fix Window	Aluminium	14
04. VENTILATORS.								
V1		7'-0"	2'-0"	+7'-6"	+9'-6"	Operable Ven.	Aluminium	7
V2		1'-6"	2'-0"	+5'-6"	+7'-6"	Operable Ven.		

Project:  
**G I K**  
Gymnasium

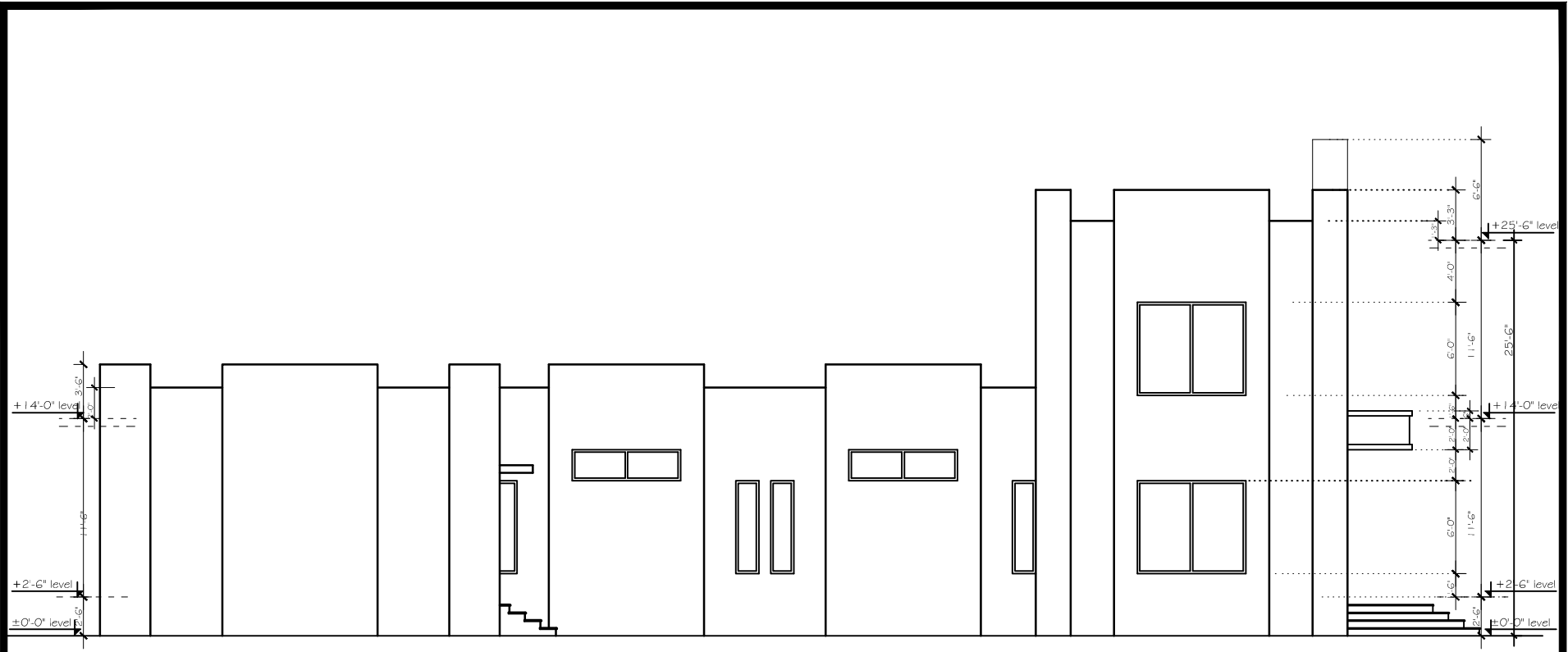
**BAYAR ASSOCIATES**  
Architects, Engineers  
And Planners  
OFFICE NO: 45 2ND FLOOR, MOHBI  
PLAZA HAIDER ROAD, KAMALPINDI.  
PH: 05110725, 0515876126  
MOBILE: 0301-5555375  
E-MAIL: bayarassociates@yahoo.com

**Working Drawing**  
Title:  
**Front & Rear Elevation**

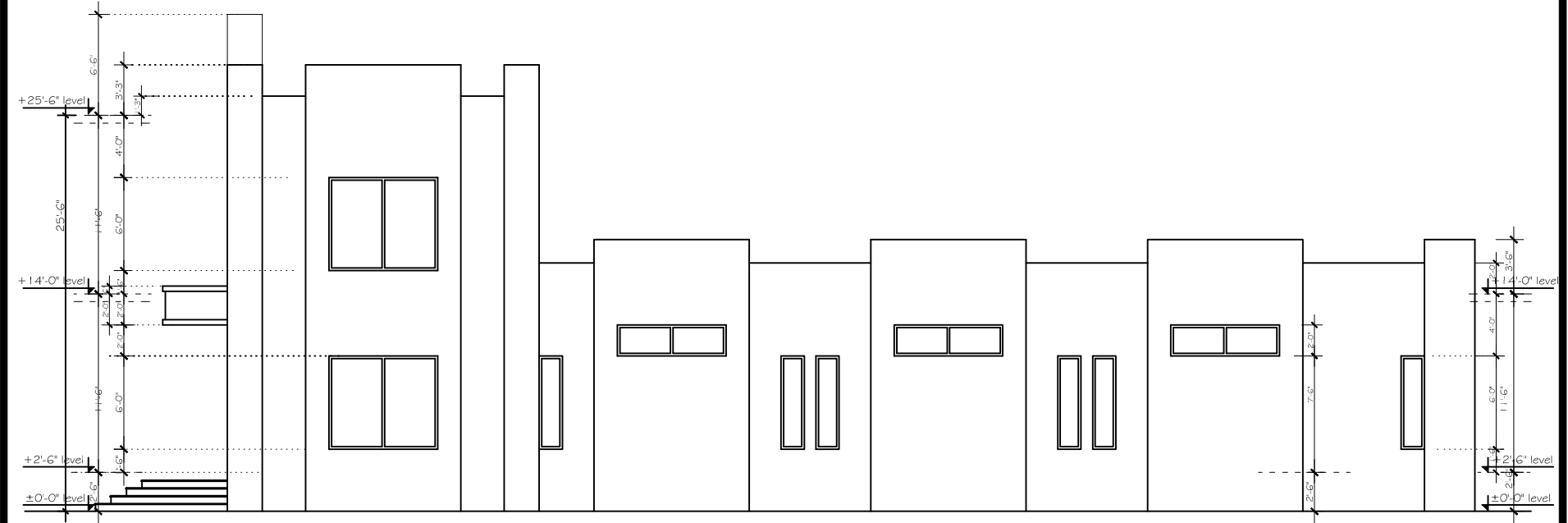
Architect:  
**BAYAR KHIZAR**  
Checked  
**AR-04**

S.No.	Date	Revisions.	
		Description	

Scale: 1/8" = 1'-0"  
Date: August -2023  
JOB NO.  
**01/2023**




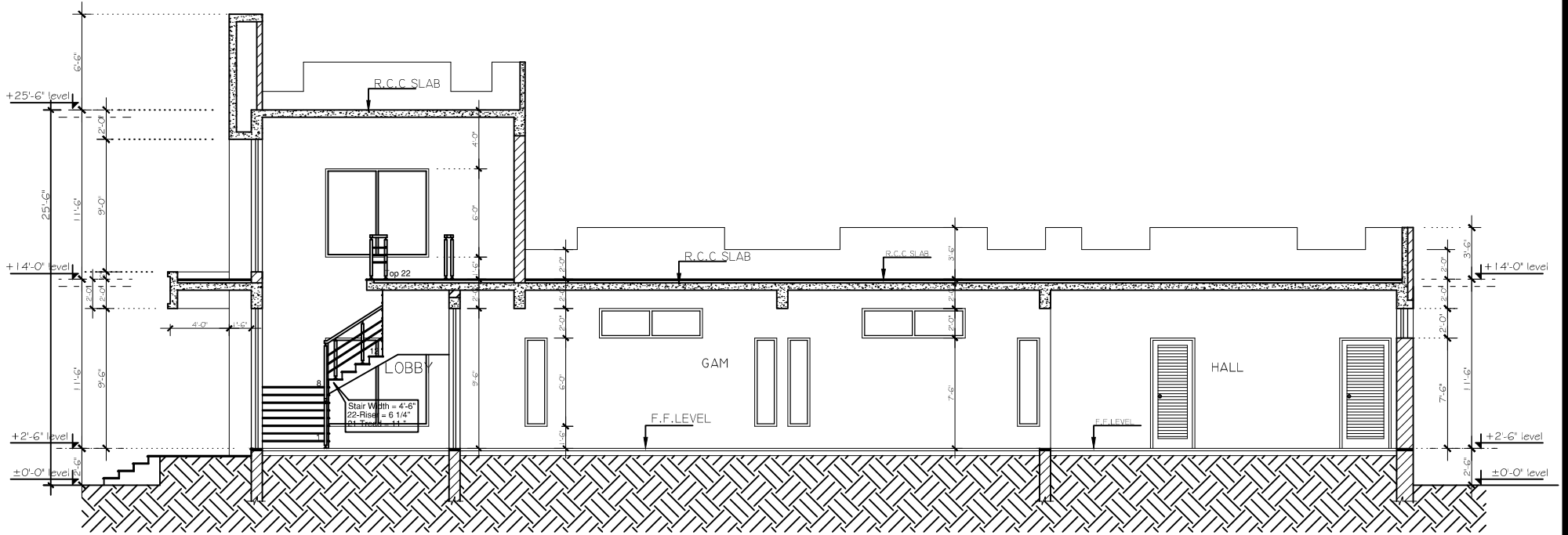
LEFT SIDE ELEVATION



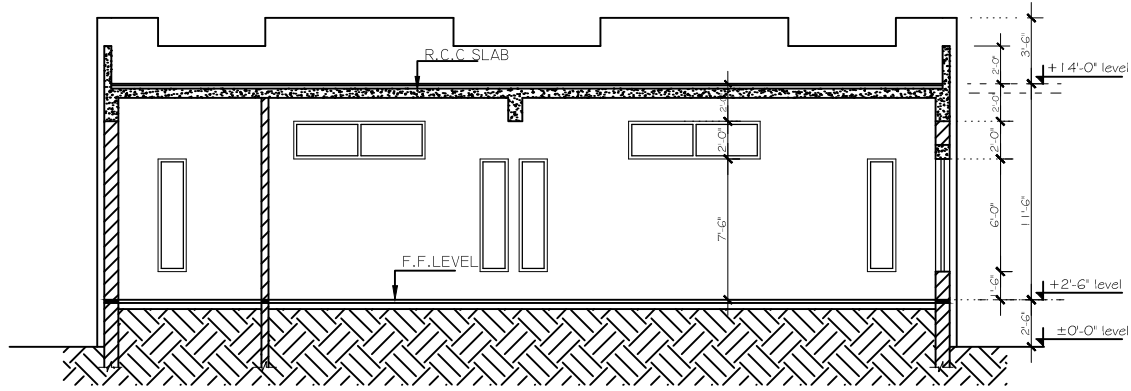
RIGHT SIDE ELEVATION

**SCHEDULE OF OPENINGS**

S/ NO.	Name.	SIZES.		Levels.		TYPE.	REMARKS	QUANTITY	Project:	Architect:	DRG. NO.
		Width	Height	Sill Lev	Lintel Lev						
01. DOORS.											
D1	5'-0"	7'-6"	±0'-0"	+7'-6"	Operable door	Wooden panel door	1	<b>GIK</b> Gymnasium	 <b>BAYAR ASSOCIATES</b> Architects, Engineers And Planners	OFFICE NO: 52 2ND FLOOR, MOHBI PLAZA HADHR BROAD, JAMALPINDI. PH: 05110725, 0515876126 MOBILE: 0301-5555375 E-MAIL: bayarassociates@yahoo.com	
D2	4'-0"	7'-6"	±0'-0"	+7'-6"	Operable door	Wooden panel door	1				
D3	3'-6"	7'-6"	±0'-0"	+7'-6"	Operable door	Wooden (Push door)	1				
D4	3'-0"	7'-6"	±0'-0"	+7'-6"	Operable door	Wooden (Push door)	1				
D5	2'-6"	7'-6"	±0'-0"	+7'-6"	Operable door	Wooden (Push door)	2				
02. DOOR/WINDOWS.											
DW1	22'-0"	9'-6"	±0'-0"	+9'-6"	Operable door	Aluminium door w/w	1	<b>Right &amp; Left Side Elevation</b>	<b>BAYAR KHIZAR</b>	<b>AR-05</b>	
DW2	13'-0"	9'-6"	±0'-0"	+9'-6"	Operable door	Aluminium door w/w	1				
03. WINDOWS.											
W1	13'-0"	9'-0"	+0'-6"	+9'-6"	Sliding Window	Aluminium	1	Title: <b>Right &amp; Left Side Elevation</b>	Scale: 1/8" = 1'-0"	<b>01/2023</b>	
W2	7'-0"	6'-0"	+1'-6"	+7'-6"	Sliding Window	Aluminium	4				
W3	1'-6"	8'-6"	+1'-0"	+9'-6"	Fix Window	Aluminium	4				
W4	1'-6"	6'-0"	+1'-6"	+7'-6"	Fix Window	Aluminium	14				
04. VENTILATORS.											
V1	7'-0"	2'-0"	+7'-6"	+9'-6"	Operable Ven.	Aluminium	7	S.No.   Date   Revisions Description	Date: August -2023	JOB NO.	
V2	1'-6"	2'-0"	+5'-6"	+7'-6"	Operable Ven.	Aluminium					



SECTION AT A-A



SECTION AT B-B

SCHEDULE OF OPENINGS

S/ NO.	Name.	SIZES.		Levels.		TYPE.	REMARKS	QUANTITY
		Width.	Height	Sill Lev.	Lintel Lev.			
<b>01. DOORS.</b>								
D1		5'-0"	7'-6"	±0'-0"	+7'-6"	Operable door	Wooden panel door	1
D2		4'-0"	7'-6"	±0'-0"	+7'-6"	Operable door	Wooden panel door	1
D3		3'-6"	7'-6"	±0'-0"	+7'-6"	Operable door	Wooden Flush door	1
D4		3'-0"	7'-6"	±0'-0"	+7'-6"	Operable door	Wooden Flush door	1
D5		2'-6"	7'-6"	±0'-0"	+7'-6"	Operable door	Wooden Flush door	2
<b>02. DOOR/WINDOWS.</b>								
DW1		22'-0"	9'-6"	±0'-0"	+9'-6"	Operable door	Aluminium door win	1
DW2		13'-0"	9'-6"	±0'-0"	+9'-6"	Operable door	Aluminium door win	1
<b>03. WINDOWS.</b>								
W1		13'-0"	9'-0"	+0'-6"	+9'-6"	Slong Window	Aluminium	1
W2		7'-0"	6'-0"	+1'-6"	+7'-6"	Slong Window	Aluminium	4
W3		1'-6"	8'-6"	+1'-0"	+9'-6"	Fix Window	Aluminium	4
W4		1'-6"	6'-0"	+1'-6"	+7'-6"	Fix Window	Aluminium	14
<b>04. VENTILATORS.</b>								
V1		7'-0"	2'-0"	+7'-6"	+9'-6"	Operable Ven.	Aluminium	7
V2		1'-6"	2'-0"	+5'-6"	+7'-6"	Operable Ven.		

Project: **GIK Gymnasium**

**Working Drawing**

Title: **Section at A-A & B-B**

Architect: **BAYAR KHIZAR**

Checked: **BAYAR KHIZAR**

Scale: 1/8" = 1'-0"

Date: August -2023

DRG. NO. **AR-06**

JOB NO. **01/2023**

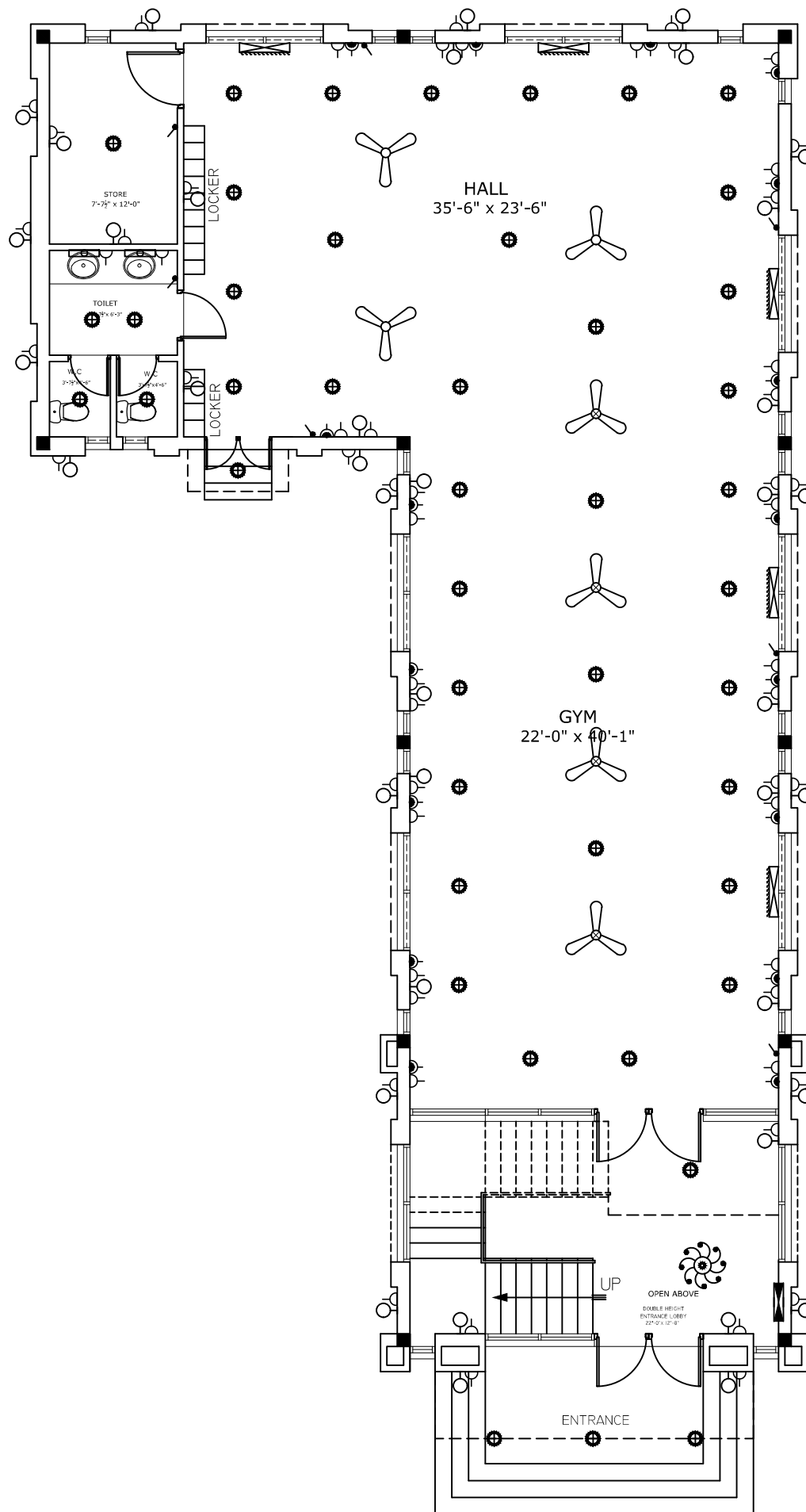
Revisions:

S.No.	Date	Description

**BAYAR ASSOCIATES**  
Architects, Engineers  
And Planners

OFFICE: NO.85 2ND FLOOR, MOREE  
PLAZA HAIDER ROAD, RAWALPINDI.  
PH: 031-5110728, 031-5676136  
MOBILE: 0301-2555375  
E-MAIL: bayarassociates@yahoo.com

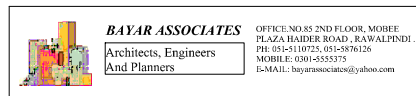




**Ground Floor Plan.**  
COV. AREA G.F = 2385.00 SFT

LEGEND		LEGEND			
S.NO.	DESCRIPTION	SYMBOL	S.NO.	DESCRIPTION	SYMBOL
1	CEILING FAN		13	2 PIN & 3 PIN SOCKET 5 AMP	
2	EXHAUST FAN		14	3 PIN SOCKET 15 AMP	
3	FLUORESCENT LIGHT 2 FEET LONG		15	CHANDLEAR	
4	FLUORESCENT LIGHT 4 FEET LONG		16	GARDEN LIGHT	
5	WALL BRACKET LIGHT		17	HANGING LIGHT	
6	CEILING LIGHT		18	MAIN BOARD	
7	EMERGANCY WALL BRACKET LIGHT		19	SPEAKER	
8	TELEPHONE OUTLET		20	T.V POINT	
9	BRACKET FAN		21	CIRCUIT BREAKER	
10	BELL PUSH		22	DISH / CABLE POINT	
11	SWITCH/ SWITCH BOARD		23.	GATE LIGHT	
12	2 WAY SWITCH FOR STAIR		22.	LAWN LIGHT.	

Project:  
**GIK**  
Gymnasium

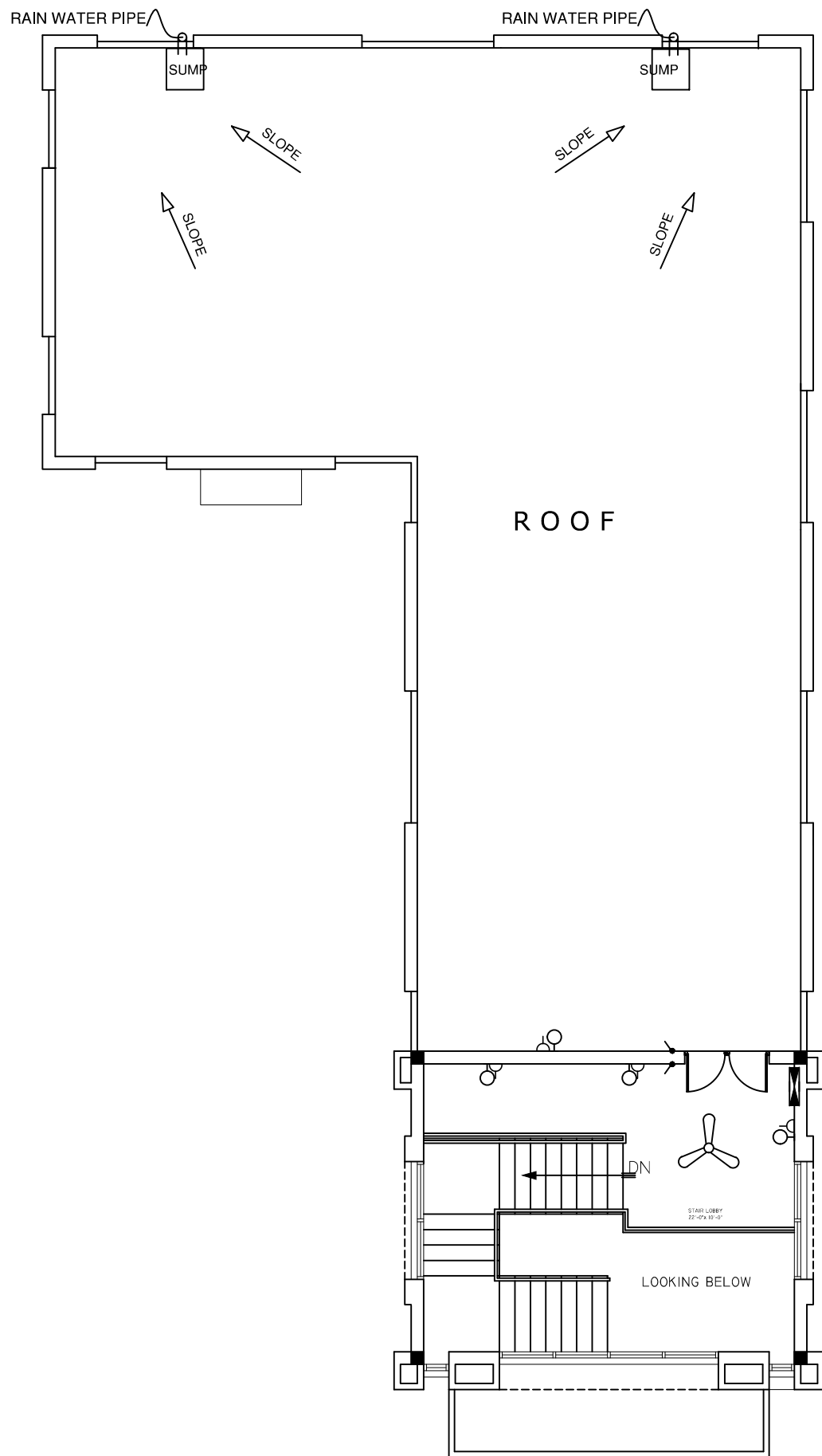


**Working Drawing**

Title: **GROUND FLOOR PLAN**  
Electrical layout

S.No.	Date	Revisions.	Description

Architect: <b>BAYAR KHIZAR</b>	DRG. NO. <b>E-01</b>
Checked	JOB NO.
Scale: <b>1/8" = 1'-0"</b>	<b>01/2022</b>
Date: <b>June -2022</b>	



**First Floor Plan.**

COV. AREA G.F = 472.00 SFT

LEGEND		LEGEND			
S.NO.	DESCRIPTION	SYMBOL	S.NO.	DESCRIPTION	SYMBOL
1	CEILING FAN		13	2 PIN & 3 PIN SOCKET 5 AMP	
2	EXHAUST FAN		14	3 PIN SOCKET 15 AMP	
3	FLUORESCENT LIGHT 2 FEET LONG		15	CHANDLEAR	
4	FLUORESCENT LIGHT 4 FEET LONG		16	GARDEN LIGHT	
5	WALL BRACKET LIGHT		17	HANGING LIGHT	
6	CEILING LIGHT		18	MAIN BOARD	
7	EMERGANCY WALL BRACKET LIGHT		19	SPEAKER	
8	TELEPHONE OUTLET		20	T.V POINT	
9	BRACKET FAN		21	CIRCUIT BREAKER	
10	BELL PUSH		22	DISH / CABLE POINT	
11	SWITCH/ SWITCH BOARD		23	GATE LIGHT	
12	2 WAY SWITCH FOR STAIR		22.	LAWN LIGHT.	

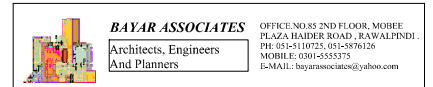
Project:

**G I K**  
Gymnasium

**Working Drawing**

Title: **FIRST FLOOR PLAN**  
**Electrical layout**

S.No.	Date	Revisions.	Description



Architect:  
**BAYAR KHIZAR**

Checked

Scale: **1/8" = 1'- 0"**

Date: **June -2022**

DRG. NO.

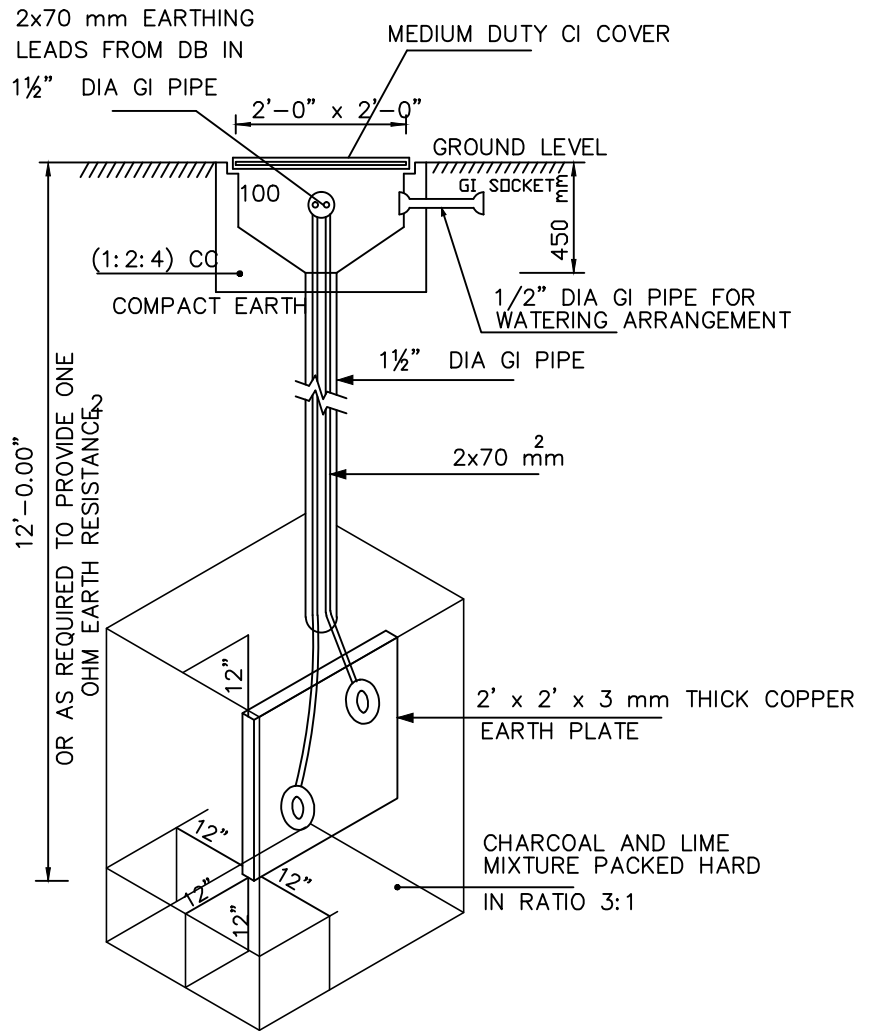
**E-02**

JOB NO.

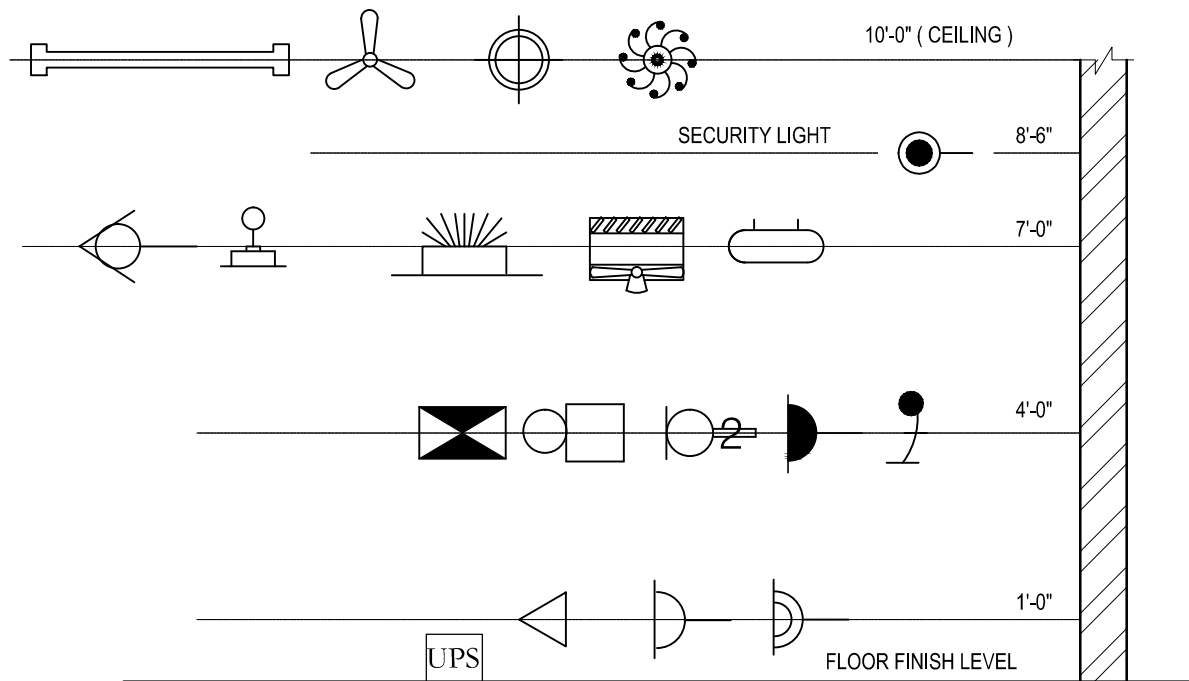
**01/2022**

**GENERAL NOTES.**

- 1- THE WHOLE OF THE ELECTRIC WORK SHALL BE CARRIED OUT ONLY BY THE LICENSED CONTRACTOR, AUTHORIZED BY THE GOVERNMENT TO UNDERTAKE SUCH WORK, UNDER THE PROVISIONS OF THE PAKISTAN ELECTRICITY RULES AND UNDER THE DIRECT SUPERVISION OF WHOLE TIME ELECTRICAL SUPERVISOR, HAVING REQUIRED CERTIFICATE OF COMPETENCY, FOR THE TYPE OF WORK UNDER EXECUTION.
- 2- THE WHOLE OF ELECTRIC WORK SHALL BE CARRIED OUT IN STRICT ACCORDANCE WITH THE REGULATIONS OF THE ELECTRIC EQUIPMENT OF BUILDINGS ( LATEST EDITION ) AS ISSUED BY THE INSTITUTE OF ELECTRICAL ENGINEERS LONDON AND SHALL ALSO COMPLY WITH PROVISIONS OF THE PAKISTAN ELECTRICITY RULES.
- 3- READ ALL OF THE ELECTRICAL DRAWING CAREFULLY AND IN 100 % BEFORE STARTING THE WORK AT SITE ( FOR PURPOSES OF NOTING FOR SHOP DRAWINGS AND FOR COORDINATION WITH OTHER SERVICES etc. ).
- 4- THE CONDUIT SHALL BE LAID IN CEILING SLAB OF THAT FLOOR UNLESS OTHERWISE NOTED
- 5- PROVIDE CONCEALED JUNCTION/PULL BOXES WHEN EVER MORE THAN TWO NINETY DEGREE BENDS/TURNS ARE MADE IN A CONDUIT RUN. A PULL BOX SHALL ALSO BE PROVIDED FOR EVERY 75 FEET OF STRAIGHT CONDUIT RUN.
- 6- AVOID JUNCTION/PULL BOXES WHEN EVER NOT REQUIRED AS THESE DO NOT APPEAR GOOD ARCHITECTURALLY.
- 7- THE WIRING THROUGH CONDUIT SHALL BE STARTED ONLY AFTER CONDUITING SYSTEM IS COMPLETELY INSTALLED AND ALL OUT LET BOXES, JUNCTION BOXES etc. ARE FIXED IN POSITION.
- 8- THE WIRES SHALL BE PULLED IN THE CONDUIT WITH CARE AND, TO FACILITATE PULLING, THE MANUFACTURER'S RECOMMENDED LUBRICANT SHALL BE USED. USE OF ANY KIND OF OIL OR SOAP WILL NOT BE PERMITTED.
- 9- WHERE SEVERAL WIRES ARE TO BE RUN IN THE SAME CONDUIT, THOSE SHALL BE PULLED IN TOGETHER.
- 10- THE WIRES SHALL NOT BE BENT TO A RADIUS LESS THAN 10 TIMES THEIR OVER ALL DIAMETER OF THE WIRES, UNLESS OTHERWISE RECOMMENDED BY THE MANUFACTURER.
- 11- THE WIRING SHALL BE CONTINUOUS BETWEEN TERMINATIONS.
- 12- THE LOOPING-IN SYSTEM SHALL BE FOLLOWED THROUGH OUT. ANY JOINT IN WIRES WILL NOT BE ALLOWED. THE USE OF CONNECTORS WILL ONLY BE ALLOWED AT LOCATIONS WHERE LOOPING-IN IS RENDERED DIFFICULT. THE CONSENT OF THE ENGINEER-INCHARGE, IN WRITING, WILL BE REQUIRED FOR USING CONNECTORS.
- 13- ALL CONDUIT SHALL BE CONCEALED AND OF PVC FOR GENERAL USE.
- 14- PVC CONDUIT SHALL BE MADE OF M/S PAKISTAN PVC LTD. KARACHI AND NAME " SHAYVL " .
- 15- MIN. SIZE OF CONDUIT IS 3/4 " DIA.
- 16- WIRES/CABLES SHALL BE MADE OF M/S PAKISTAN CABLES LTD. KARACHI AND OF COPPER CONDUCTOR ONLY.
- 17- ALL CONDUIT FOR TELEPHONE SYSTEM IS 1" DIA UNLESS OTHERWISE NOTED.
- 18- CIRCUIT BREAKERS ARE MADE OF M/S MERLIN GERIN FRANCE.
- 19- PROVIDE A PULL WIRE OF 12 INCHES OF SLACK AT EACH END OF THE CONDUIT RUN.
- 20- THE DISTANCE OF THE SWITCH BOX FROM WHERE THE DOOR STARTS WILL BE 8" OR AS APPROVED BY ENGINEER-INCHARGE.
- 21- LOCATIONS OF ALL EQUIPMENT, FIXTURES AND ACCESSORIES WILL BE LIABLE TO CHANGE AT SITE.
- 22- MIN. SIZE OF SINGLE CORE WIRE SHALL BE 1.5 mm sq.
- 23- ELECTRIC DIAGRAMS ARE DIAGRAMMATIC AND NOT TO BE SCALED.
- 24- ALL EQUIPMENT TO BE INSTALLED SHALL BE FLUSH MOUNTED, UNLESS OTHERWISE NOTED.
- 25- FACE PLATES OF SWITCH, SOCKETS, TELEPHONE AND OTHER OUTLETS SHALL BE FLUSH WITH FINISHED SURFACE.
- 26- THE ELECTRICAL RESISTANCE OF ECC TOGETHER WITH EARTH LEAD AND EARTH ELECTRODE SHALL NOT EXCEED 1 OHM. IF THE RESISTANCE TO EARTH EXCEEDS TO 1 OHM, THEN CONTRACTOR SHALL OBTAIN INSTRUCTIONS FROM THE CONSULTANT FOR ANY RECTIFICATION. RUN TWO SEPARATE LEADS TO EACH ELECTRODE.
- 27- CIRCUIT DIRECTORY SHALL BE MARKED ON DBs AS PER DRAWING.
- 28- WHEN EVER MORE POWER 1 CIRCUIT ( SINGLE PHASE FOR LIGHT AND SOCKETS etc. ) RUN IN ONE COMMON CONDUIT, EACH CIRCUIT SHALL HAVE ITS OWN SEPARATE AND INDEPENDENT PHASE WIRE, NEUTRAL AND ECC. NEUTRAL WIRE SHALL HAVE THE SIZE EQUAL TO ITS PHASE WIRE. NEUTRAL WIRE AND ECC OF ONE CIRCUIT SHALL NOT BE MADE COMMON WITH NEUTRAL AND ECC OF THE OTHER CIRCUIT.
- 29- FOR SIZE OF CIRCUIT WIRING WIRES, POINTS WIRING WIRES AND ECCs, USE THE " SCHEDULE OF WIRES FOR WIRING " , UNLESS OTHERWISE NOTED.
- 30- USE SEPARATE SWITCH BOX FOR EACH CIRCUIT IF THERE ARE MORE THAN ONE CIRCUIT COMING AT ONE LOCATION.
- 31- THE MOUNTING HEIGHT OF DIFFERENT FIXTURES ABOVE FINISHED FLOOR LEVEL SHALL BE AS FOLLOWING AS MEASURED FROM THE BOTTOM OF FIXTURE.
  - a. DISTRIBUTION BOARD - - - - 3'-6".
  - b. LIGHT AND FAN CONTROL SWITCH - - - - 3'-6".
  - c. 5 A, 15 A/20 A SWITCH SOCKETS - - - - 0'-9".
  - d. 15/20 A SWITCH SOCKET FOR A/C - - - AT LEVEL AS PER A/C MOUNTING POSITION.
  - e. WALL MOUNTING LIGHT, LIGHT BRACKETS - - - - 7'-0".



**EARTH POINT DETAILS**

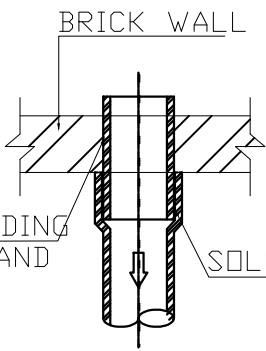


**HEIGHT FOR ELECTRICAL POINTS**

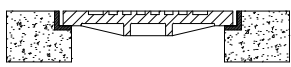
LEGEND					Project:	
S.NO.	DESCRIPTION	SYMBOL	S.NO.	DESCRIPTION	SYMBOL	
1	CEILING FAN		13	2 PIN & 3 PIN SOCKET 5 AMP		<b>G I K</b> Gymnasium
2	EXHAUST FAN		14	3 PIN SOCKET 15 AMP		
3	FLUORESCENT LIGHT 2 FEET LONG		15	CHANDLEAR		<b>Working Drawing</b>
4	FLUORESCENT LIGHT 4 FEET LONG		16	GARDEN LIGHT		
5	WALL BRACKET LIGHT		17	HANGING LIGHT		<b>Electoral layout</b>
6	CEILING LIGHT		18	MAIN BOARD		
7	EMERGENCY WALL BRACKET LIGHT		19	SPEAKER		Title: (GENERAL NOTES / TYPICAL DETAILS)
8	TELEPHONE OUTLET		20	T.V POINT		
9	BRACKET FAN		21	CIRCUIT BREAKER		Revisions.
10	BELL PUSH		22	DISH / CABLE POINT		
11	SWITCH/ SWITCH BOARD		23	GATE LIGHT		S.No.      Date      Description
12	2 WAY SWITCH FOR STAIR		24	LAWN LIGHT		

<b>BAYAR ASSOCIATES</b>		OFFICE: NO. 85 2ND FLOOR, MOHEE PLAZA HADER ROAD, RAWALPINDI. PH: 051-5110725, 051-5876126. MOBILE: 0301-5555375. E-MAIL: bayarassociates@yahoo.com
Architects, Engineers And Planners	Architect:	DRG. NO.
	Checked:	E-03
	Scale:	JOB NO.
	Date:	01/2022

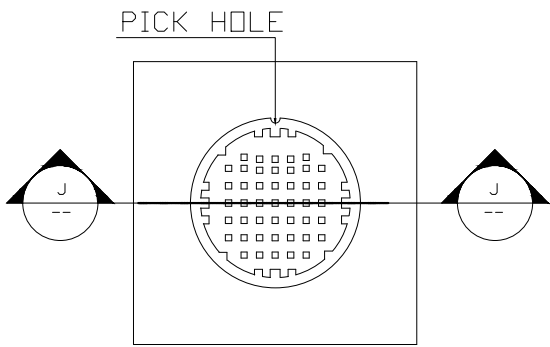
BRICK WALL  
 APPLY PIPE WELDING SOLUTION AND SAND  
 SOLUTION WELDED



H -- -- DETAIL



J-J -- -- SECTION

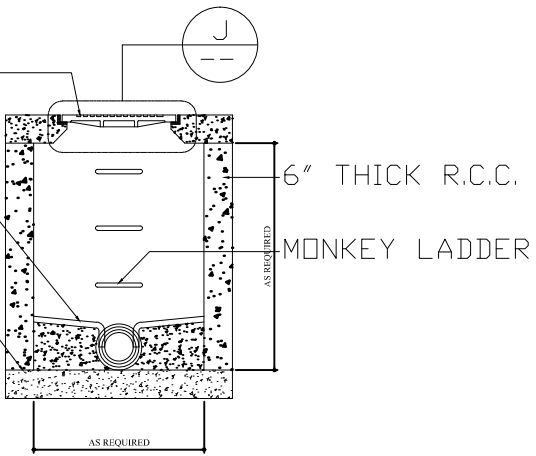


I -- -- DETAIL

CAST IRON MANHOLE COVER AND FRAME

BENCHING FLOATED SMOOTH WITH STEEL TROWEL. SLOPE ABOUT 1 IN 6 CEMENT MORTAR 1:1

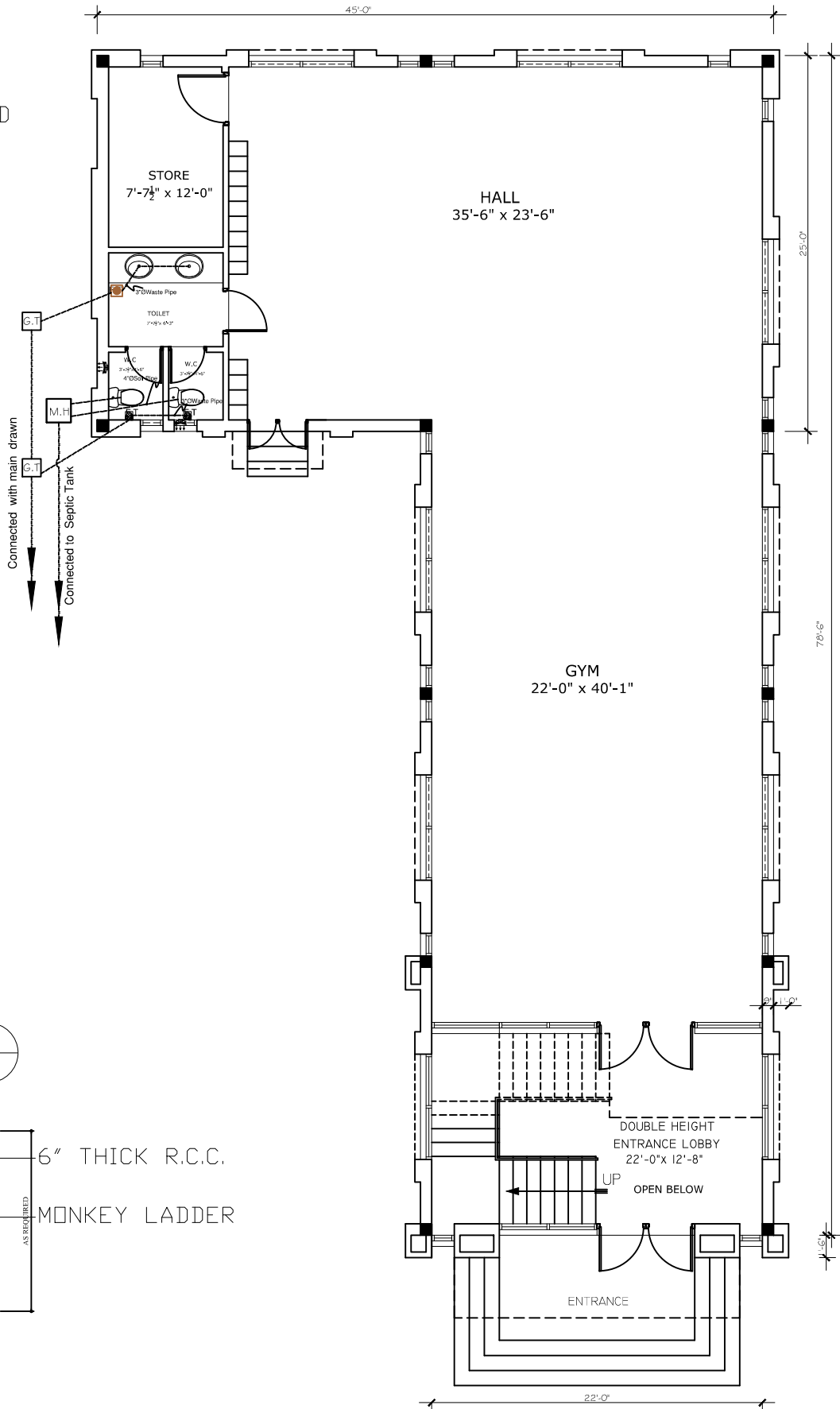
ROUGHENED CLEANED AND WETTED BEFORE PLACING CONCRETE FOR THE WALLS



H-H -- -- SECTION

NOTE:- IF THE MANHOLE EXCEEDED TO 3' DEPTH THEN WE USE THAT MONKEY LADDER.

DETAIL OF MANHOLE



Ground Floor Plan.

PLUMBING LEGEND.

S.NO.	NAMES	SYMBOLS.	S.NO.	NAMES	SYMBOLS.	S.NO.	NAMES	SYMBOLS.
03.	Wash Hand Basin.		13.	Toilet Paper Holder		25.	Hot Water Pipe (HWP)	
04.	Lavatory.		14.	Hose Spray		26.	Cold Water Pipe (CWP)	
05.	Western W/C		15.	Towel Rail		27.	Clean out	
06.	Bidet		16.	Towel Ring		28.	Water Tap.	
07.	Eastern W.C.		17.	Soap Dispenser.				
08.	Corner B/Tub		18.	Ext. Dispenser.				
09.	Bath Tub		19.	Geyser (G.) Boiler (B).				
10.	Shower Cabin		20.	Manhole (M.H.)				
11.	Shower Tray		21.	Gully Traps (G.T.)				
12.	Double Bowl Sink		22.	RCC Pipe (R/P)				
	Single Bowl Sink		23.	Waste Pipe (W/P)				
	Floor Drain		24.	Soil Pipe (S/P)				

Project: **GIK Gymnasium**

**Working Drawing**

Title: **Ground Floor Plan Plumbing layout**

S.No.	Date	Revisions.
		Description

**BAYAR ASSOCIATES**  
 Architects, Engineers And Planners

OFFICE NO. 45 2ND FLOOR, MOREE PLAZA, HADISER ROAD, KAWALPINDI.  
 PH: 051180725, 0515876126  
 MOBILE: 0301-555375  
 E-MAIL: bayarassociates@yahoo.com

Architect: **BAYAR KHIZAR**

Checked: \_\_\_\_\_

Scale: 1/8" = 1'-0"

Date: August -2023

DRG. NO. **P-01**

JOB NO. **01/2023**